

Features

The AL combined type high flow vacuum pump can produce very high vacuum flow. This type of pump can be used in many applications especially in high leakage systems, porous materials vacuum system and large vacuum circuits. The vacuum gauge, air pressure gauge, 1" silencer and mounting bracket are also supplied together with the pump.



Specifications

Max.vacuum level	-kPa	81
Max.vacuum flow	l/min	3970
Air supply pressure	bar	3.4~6 max.7
Temperature range	°C	-20~80
Weight	g	3724~7929
Noise level	dBA	55~68

Technical Parameters

Model	Max.vacuum level (-kPa)	Max.vacuum flow (l/min)	Air consumption (l/min)	Weight g	Min tube inner Φ (within 2m)		
					Air supply	Vacuum	EXhaust
AL150M	81	1660	650	3724	> 10	> 32	> 40
AL200M		1950	830	3892	> 10	> 32	> 40
AL300M		2840	1240	5525	> 12	> 40	> 60
AL400M		3340	1650	6447	> 12	> 40	> 60
AL500M		3970	2100	7929	> 14	> 45	> 70

How to Order

AL150M P- N - A

① ② ③ ④

① Model

AL150M	AL400M
AL200M	AL500M
AL300M	

② Exhaust specification

Nil	Standard
P	Side exhaust

③ Sealing

N	NBR
E	EPDM
V	VITON

④ Non-Return Valve

A	Yes
-	No

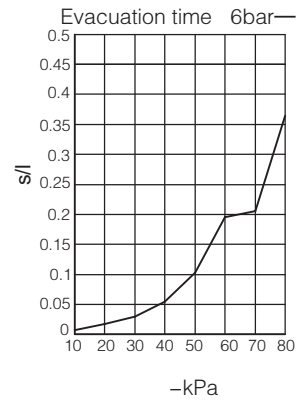
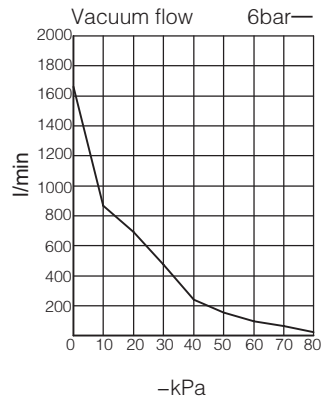
Vacuum flow(l/min)at different vacuum levels(-kPa)

Model	Air supply pressure bar	Air consumption l/min	Vacuum flow (l/min) at different vacuum levels(-kPa)									Max.vacuum level -kPa
			0	10	20	30	40	50	60	70	80	
AL150M	6	650	1660	870	720	450	240	160	115	70	32	81
AL200M		830	1950	1140	870	520	305	230	160	105	38	81
AL300M		1240	2840	1660	1330	810	580	360	265	155	45	81
AL400M		1650	3340	2200	1730	1110	630	590	370	225	80	81
AL500M		2100	3970	2710	1990	1320	790	660	360	270	92	81

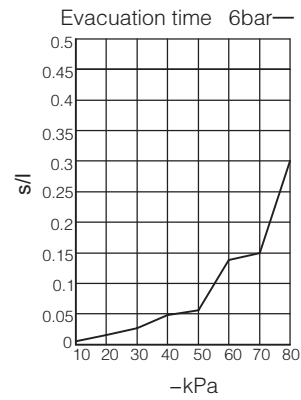
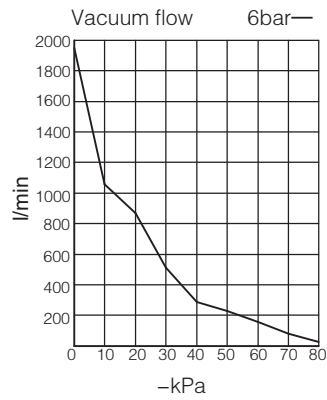
Evacuation time(s/l)to reach different vacuum levels(-kPa)

Model	Air supply pressure bar	Air consumption l/min	Evacuation time (s/l) to reach different vacuum levels(-kPa)								Max.vacuum level -kPa
			10	20	30	40	50	60	70	80	
AL150M	6	650	0.007	0.019	0.028	0.051	0.105	0.198	0.21	0.37	81
AL200M		830	0.005	0.013	0.023	0.04	0.06	0.098	0.15	0.3	81
AL300M		1240	0.004	0.011	0.018	0.03	0.04	0.07	0.1	0.2	81
AL400M		1650	0.003	0.008	0.01	0.015	0.03	0.06	0.08	0.15	81
AL500M		2100	0.002	0.005	0.008	0.01	0.022	0.04	0.06	0.1	81

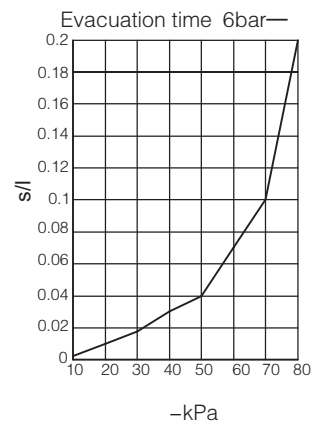
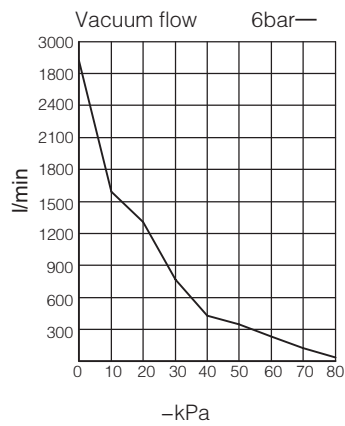
• AL150M



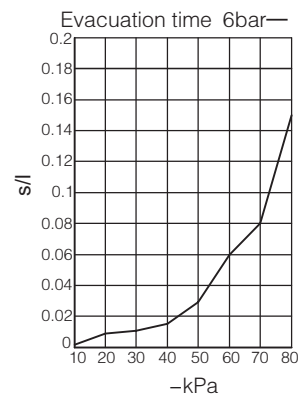
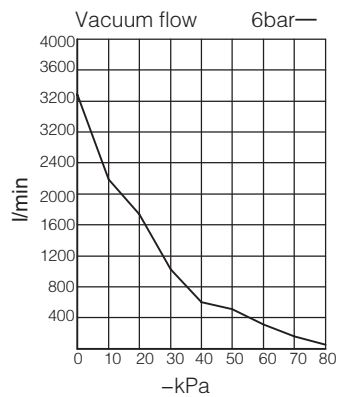
• AL200M



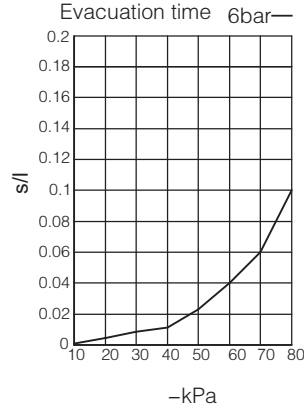
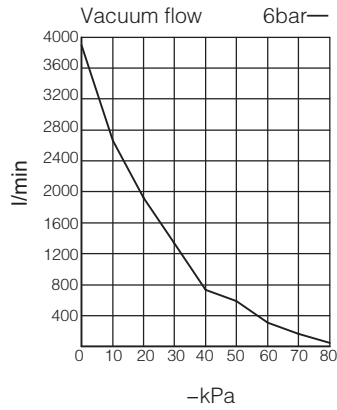
• AL300M



• AL400M

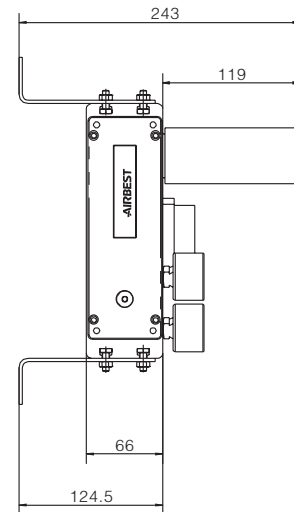
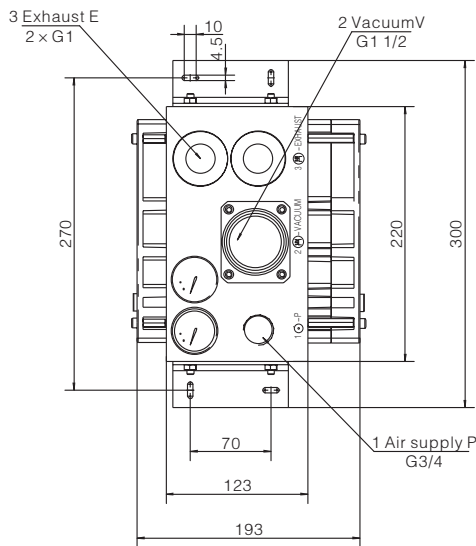


• AL500M

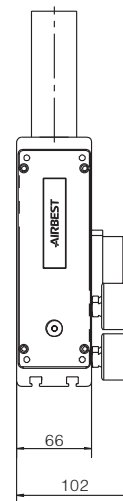
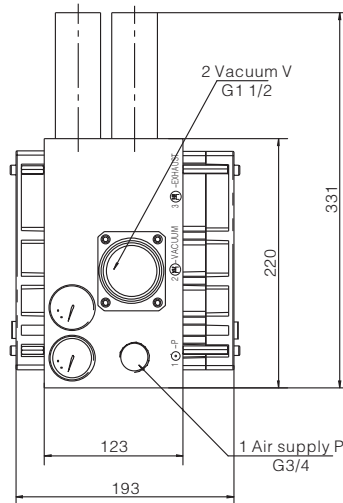


Dimensions (mm)

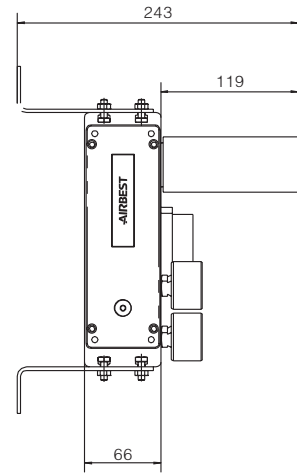
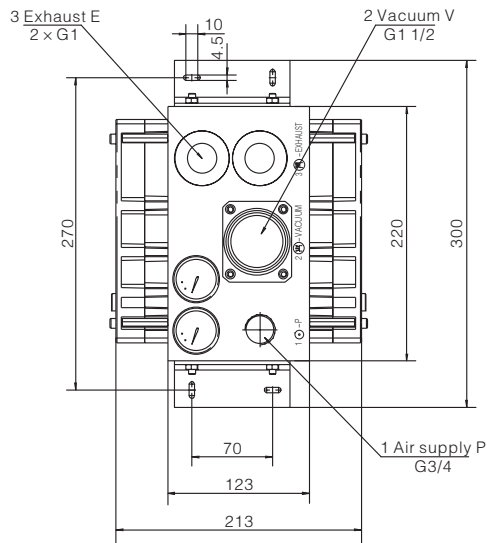
• AL150M



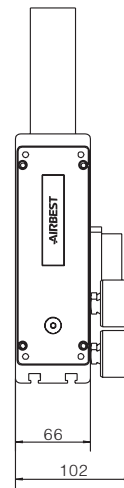
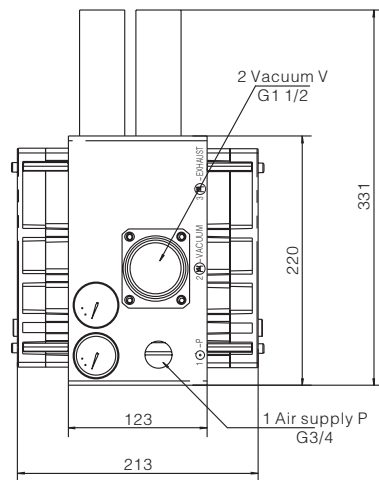
• AL150MP



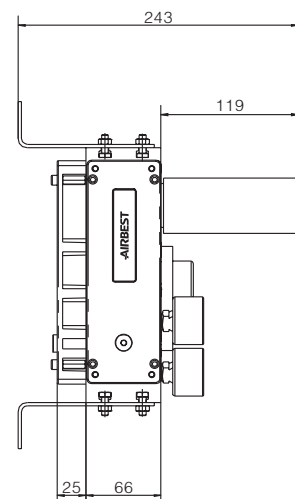
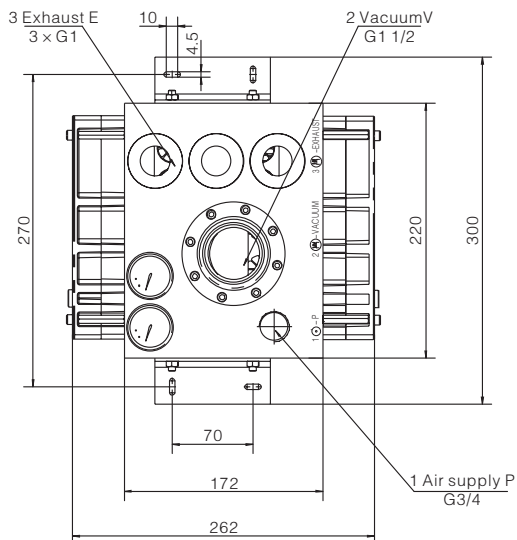
• AL200M



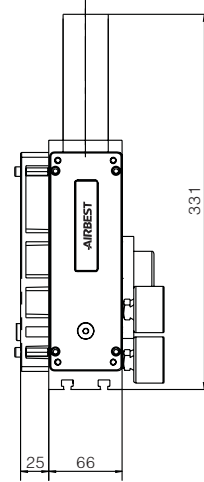
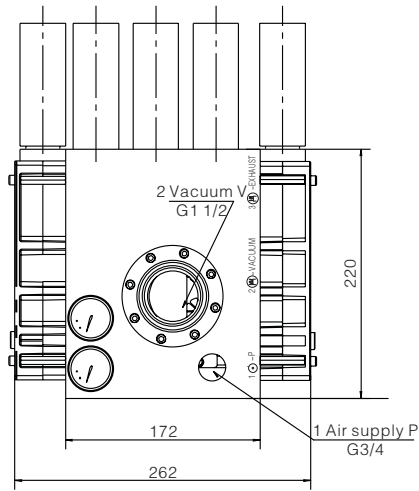
• AL200MP



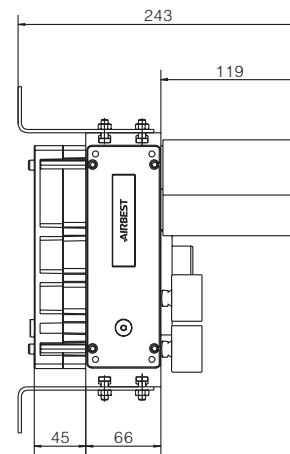
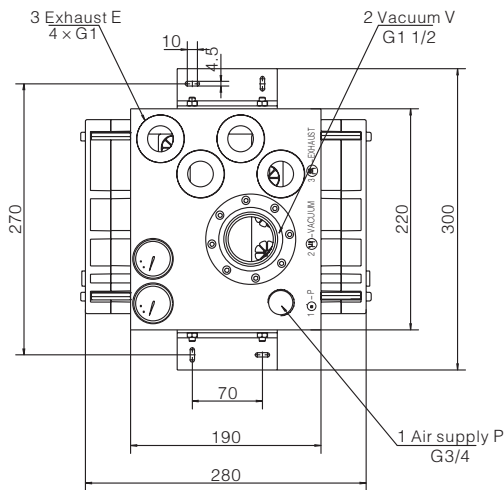
• AL300M



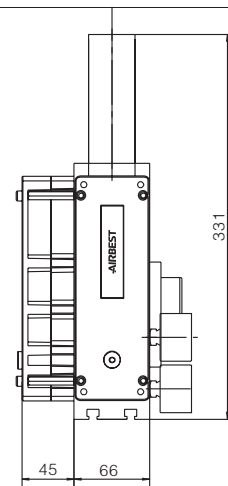
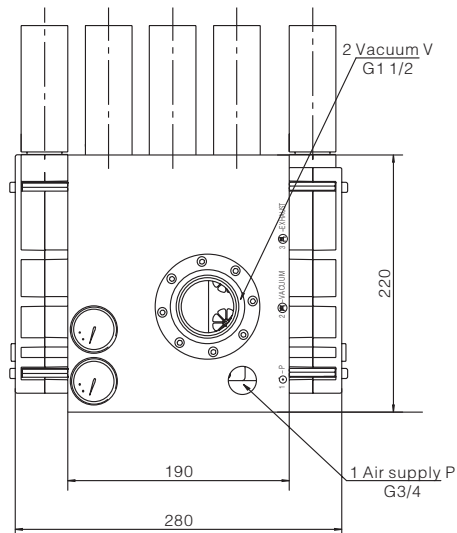
• AL300MP



• AL400M



• AL400MP



ABM

ABX

ABM/ABX
Combined type

AM

AL

AH

AM
Combined type

AL
Combined type

AH
Combined type

AZL 112

AZL 212

ACP

ACPF

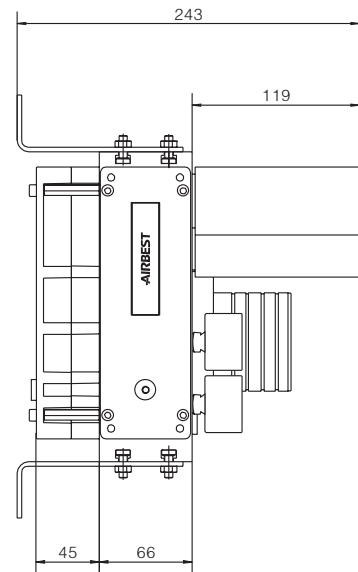
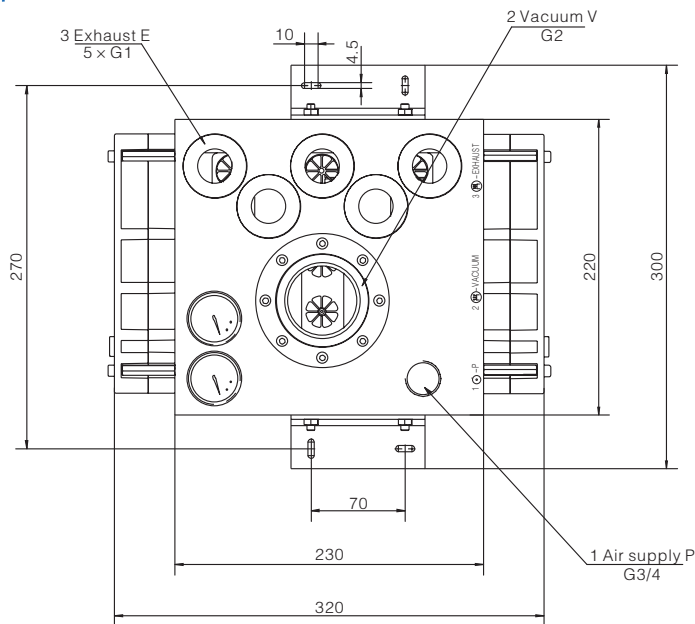
ACV

AZH

AZU

ASBP

• AL500M



• AL500MP

