

How to Order

K E 5 10 - Y - A12

① ② ③ ④

① Buffer style

E	External spring
I	Built-in spring

② External spring buffer stroke

	10
	20

Built-in spring buffer stroke

R, B E, S	06、10、25
V type	07、15、20

③ Vacuum entry-External spring connection

Nil	Standard
Y	Pipe connector

Built-in spring connection

Nil	Standard	
V	Female thread	
R	B	Refer to the outline dimension
E	S	

④ Mounting connection-male thread

Symbol	Male thread	Indent HEX
A8	M8 × 1	12
A10	M10 × 1	14
A12	M12 × 1	14

Remark: Vacuum pad port connection type

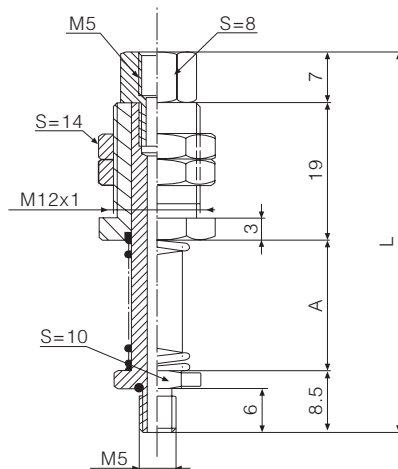
Model	Suitable vacuum pad model
R type	SB6X、SU1.5X、SU2X、SU4X
B type	SU10(15)、SF15、SB10(12、15)
E type	SU4(6、8)、SB5(8)
S type	SU2(3)



Features

- ☆ With buffer spring, it can adjust height differences automatically when transfer the objects with height differences.
- ☆ Various connection thread and different stroke, it is suitable for standard vacuum pad. Wide applications.
- ☆ Touch with the fragile workpiece flexibly, buffer the impact to the object.

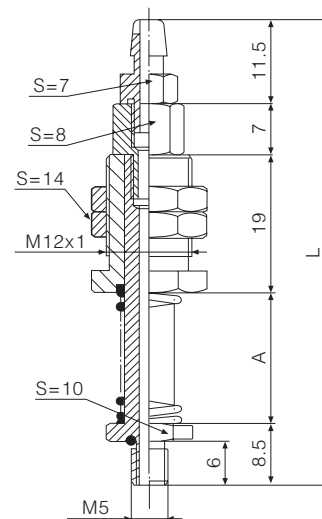
Dimensions (mm)



KE5 10 -A12

(mm)

Buffer stroke	A	L
10	18	53
20	28	63



KE5 10 -Y-A12

(mm)

Buffer stroke	A	L
10	18	64
20	28	74

TXC

SB

SBF

SBL

SF

SU

SFP

SBP

SXP

AZP

AZPT

AZPR

PA

PC

PF

PJ

PJG

PS

PU

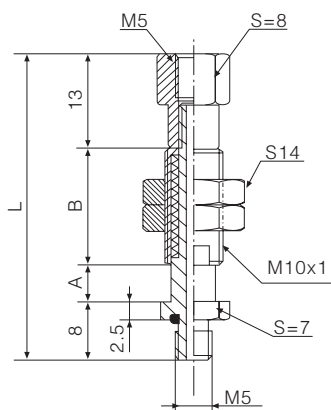
K

Fittings for
Vacuum Pads

BH

Bulkhead
Connector

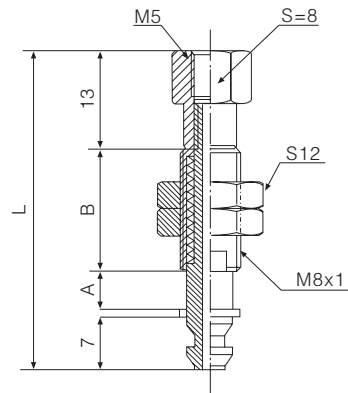
Ball Joint



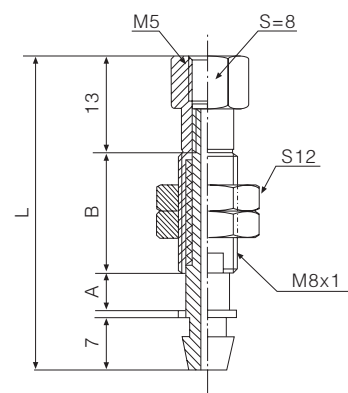
KI5 06 -A10

(mm)

Buffer stroke	A	B	L
6	6	15	42
10	10	44	75
25	25	44	90



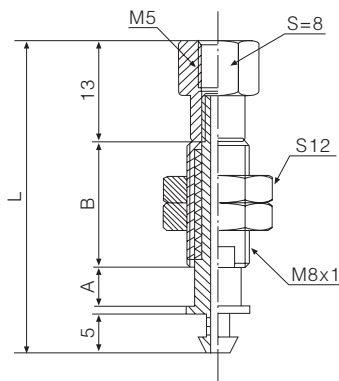
KI5 06 -R-A8



KI5 06 -B-A8

(mm)

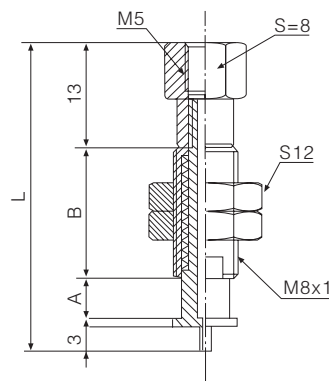
Buffer stroke	A	B	L
6	6	15	42
10	10	44	75
25	25	44	90



KI5 06 -E-A8

(mm)

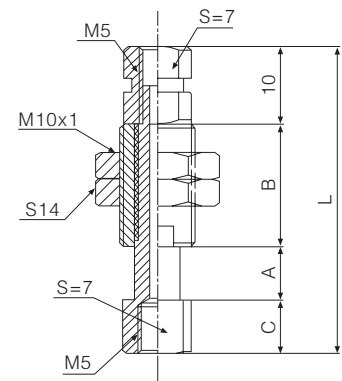
Buffer stroke	A	B	L
6	6	15	40
10	10	44	73
25	25	44	88



KI5 06 -S-A8

(mm)

Buffer stroke	A	B	L
6	6	15	38
10	10	44	71
25	25	44	86



KI5 15 -V-A10

(mm)

Buffer stroke	A	B	C	L
7	7	19	7	43
15	15	23	27	75
20	20	36	7	73

S:Width across flats

How to Order

K E 18 10 - L - A14

① Buffer style

E	External spring
I	Built-in spring

② Buffer stroke

	10
	20
	30
	50

③ Vacuum entry connection

Nil	Standard
L	Lateral exhaust
V	Female thread

④ Mounting connection-Male thread

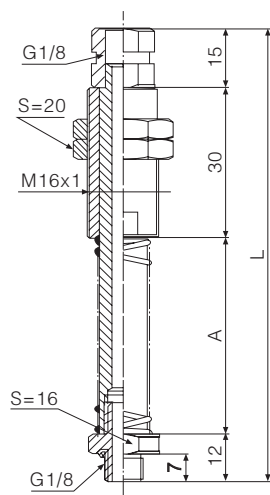
Symbol	Male thread	Indent HEX
A14	M14 × 1	19
A16	M16 × 1	20
A18	M18 × 1	22



Features

- ☆ With buffer spring, it can adjust height differences automatically when transfer the objects with height differences.
- ☆ Various connection thread and different stroke, it is suitable for standard vacuum pad. Wide applications.
- ☆ Touch with the fragile workpiece flexibly, buffer the impact to the object.

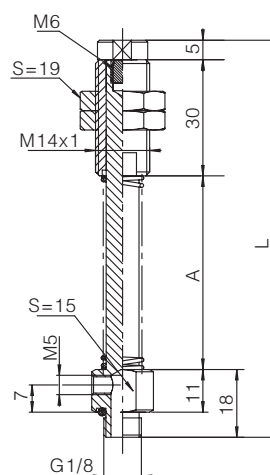
Dimensions (mm)



KE18 50 -A16

(mm)

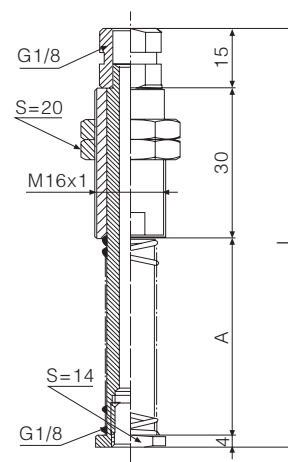
Buffer stroke	A	L
10	20	77
20	35	92
30	50	107
50	70	127



KE18 30 -L-A14

(mm)

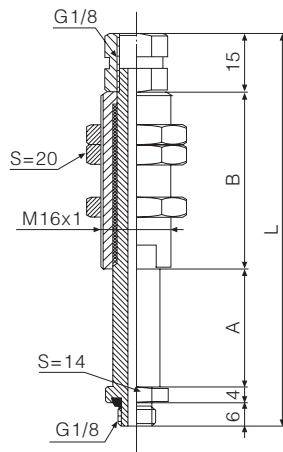
Buffer stroke	A	L
10	20	73
20	35	88
30	50	103
50	70	123



KE18 20 -V-A16

(mm)

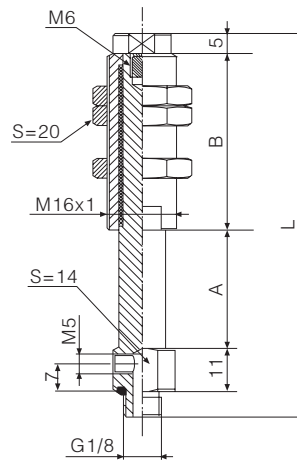
Buffer stroke	A	L
10	20	69
20	35	84
30	50	99
50	70	119



KI18 20 -A16

(mm)

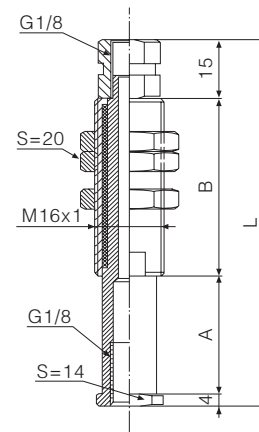
Buffer stroke	A	B	L
10	10	25	60
20	20	35	80
30	30	45	100
50	50	65	140



KI18 20 -L-A16

(mm)

Buffer stroke	A	B	L
10	10	25	58
20	20	35	78
30	30	45	98
50	50	65	138



KI18 20 -V-A16

(mm)

Buffer stroke	A	B	L
10	10	25	54
20	20	35	74
30	30	45	94
50	50	65	134

How to Order

K I 14 10 - V - A18

① ② ③ ④

① Buffer style

E	External spring
I	Built-in spring

② Buffer stroke

10、20、30、50

③ Vacuum entry connection

Nil	Standard
V	Female thread

④ Mounting connection-Male thread

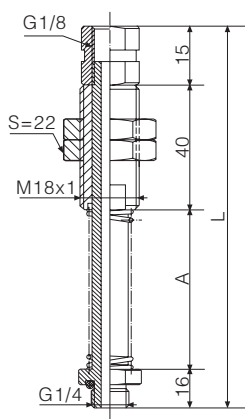
Symbol	Male thread	Indent HEX
A18	M18 × 1	22
A20	M20 × 1.5	24



Features

- ☆ With buffer spring, it can adjust height differences automatically when transfer the objects with height differences.
- ☆ Various connection thread and different stroke, it is suitable for standard vacuum pad. Wide applications.
- ☆ Touch with the fragile workpiece flexibly, buffer the impact to the object.

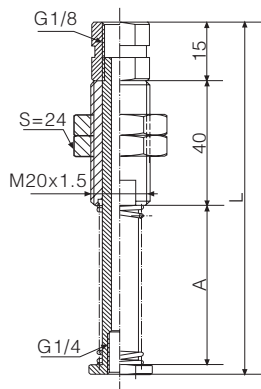
Dimensions (mm)



KE14 20 -A18

(mm)

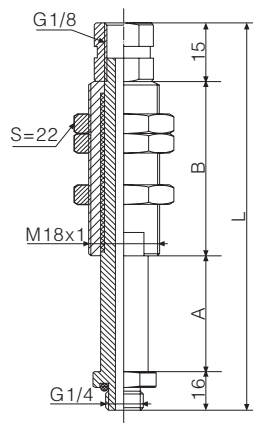
Buffer stroke	A	L
10	20	91
20	35	106
30	50	121
50	70	141



KE14 20 - V -A20

(mm)

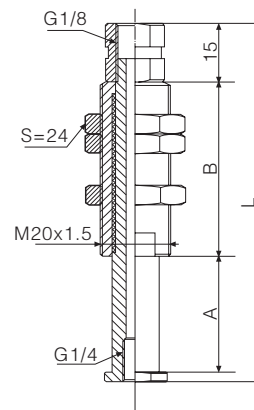
Buffer stroke	A	L
10	20	80
20	35	95
30	50	110
50	70	130



KI14 20 -A18

(mm)

Buffer stroke	A	B	L
10	10	25	66
20	20	35	86
30	30	45	106
50	50	65	146



KI14 20 - V -A20

(mm)

Buffer stroke	A	B	L
10	10	25	55
20	20	35	75
30	30	45	95
50	50	65	135

TXC

SB

SBF

SBL

SF

SU

SFP

SBP

SXP

AZP

AZPT

AZPR

PA

PC

PF

PJ

PJG

PS

PU

K

Fittings for Vacuum Pads

BH

Bulkhead Connector

Ball Joint

How to Order

K I K 38 10 - A18

① ② ③ ④

① Buffer style

E	External spring
I	Built-in spring

② Rotary type

Nil	Rotating
K	Non-Rotating

Remark, When it is external spring(E), there is no non-rotating type

③ Buffer stroke

10
20
30
50

④ Mounting connection-Male thread

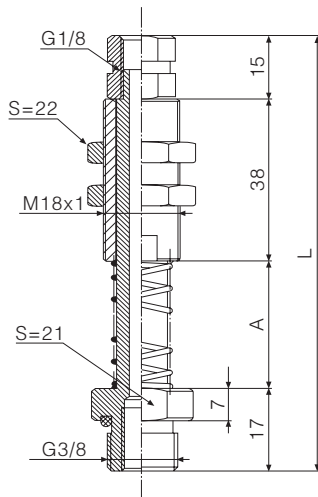
Symbol	Male thread	Indent HEX
A18	M18 × 1	22
A20	M20 × 1.5	24



Features

- ☆ With buffer spring, it can adjust height differences automatically when transfer the objects with height differences.
- ☆ Various connection thread and different stroke, it is suitable for standard vacuum pad. Wide applications.
- ☆ Touch with the fragile workpiece flexibly, buffer the impact to the object.
- ☆ Preventing rotate function is alternative.

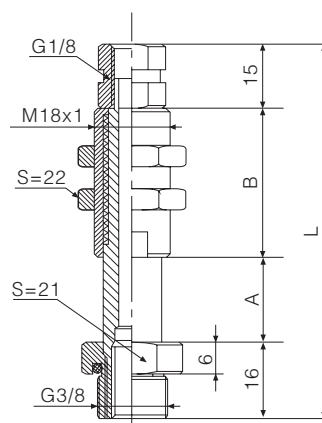
Dimensions (mm)



KE38 20 -A18

(mm)

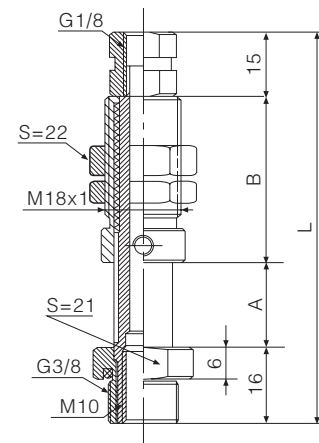
Buffer stroke	A	L
10	20	90
20	35	105
30	50	120
50	70	140



KI38 20 -A18

(mm)

Buffer stroke	A	B	L
10	10	24	65
20	20	35	86
30	30	46	107
50	50	66	147



KIK38 20 -A18

(mm)

Buffer stroke	A	B	L
10	10	28	69
20	20	39	90
30	30	50	111
50	50	70	151

How to Order

K E 12 10 - L - A18

① Buffer style

E	External spring
I	Built-in spring

② Buffer stroke

	10
	20
	30
	50

③ Vacuum entry connection

Nil	Standard
L	Lateral exhaust

④ Mounting connection-Male thread

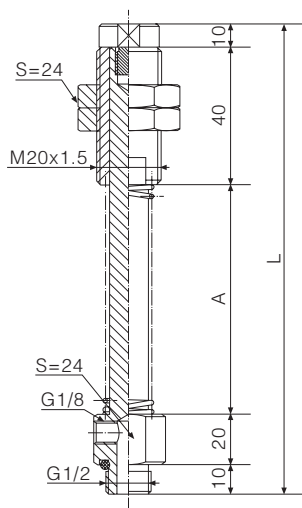
Symbol	Male thread	Indent HEX
A18	M18 × 1	22
A20	M20 × 1.5	24
A22	M22 × 1.5	26



Features

- ☆ With buffer spring, it can adjust height differences automatically when transfer the objects with height differences.
- ☆ Various connection thread and different stroke, it is suitable for standard vacuum pad. Wide applications.
- ☆ Touch with the fragile workpiece flexibly, buffer the impact to the object.

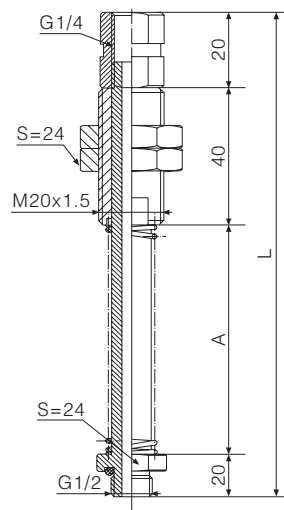
Dimensions (mm)



KE12 30 -L-A20

(mm)

Buffer stroke	A	L
10	20	100
20	35	115
30	50	130
50	90	170



KE12 30 -A20

(mm)

Buffer stroke	A	L
10	20	100
20	35	115
30	50	130
50	90	170

TXC

SB

SBF

SBL

SF

SU

SFP

SBP

SXP

AZP

AZPT

AZPR

PA

PC

PF

PJ

PJG

PS

PU

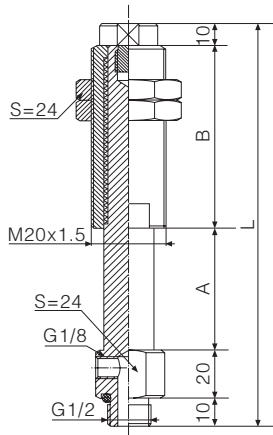
K

Fittings for Vacuum Pads

BH

Bulkhead Connector

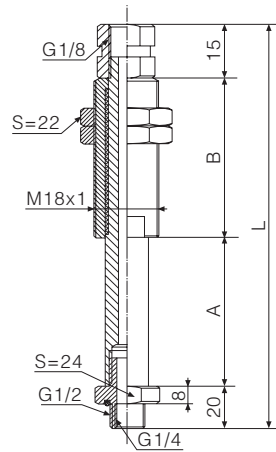
Ball Joint



KI12 30 -L-A20

(mm)

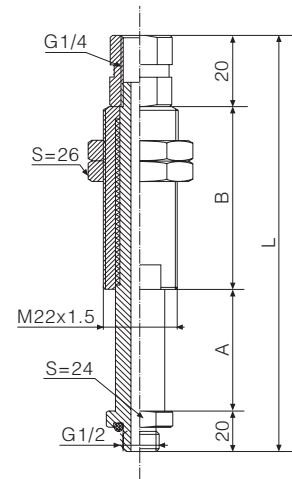
Buffer stroke	A	B	L
10	10	30	80
20	20	35	95
30	30	50	120
50	50	70	160



KI12 30 -A18

(mm)

Buffer stroke	A	B	L
10	10	30	75
20	20	35	90
30	30	50	115
50	50	70	155



KI12 30 -A22

(mm)

Buffer stroke	A	B	L
10	10	30	80
20	20	35	95
30	30	50	120
50	50	70	160