



Výrobce: AIRpipe Europe SAS

Popis: kovové spojky s unikátním systémem aktivního těsnění pro absolutní těsnost potrubí a zamezení vzniku úniků média

Aplikace: robustní potrubní systém pro aplikace v průmyslu; vhodný pro instalace ve venkovním prostředí

Médium: stlačený vzduch, vakuum, dusík, oxid uhličitý, argon a další nejedovaté a netoxické plyny

Pracovní tlak: 16 bar (DN20 až DN150); 13 bar (DN200 až DN250)

Materiál: hliníková slitina A360 (DN20 až DN50); práškově lakovaná ocel (DN63 až DN250)

Aplikované normy: certifikace dle směrnic PED a CPR, bezsilikonové provedení;
ISO 9001 – systém řízení kvality (QMS)
ISO 14001 – systém environmentálního managementu (EMS)
ISO 45001 – systém managementu bezpečnosti a ochrany zdraví při práci (OHSMS)

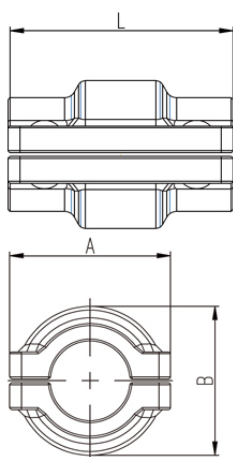


Přímé spojky; standardní těsnění NBR

| Obj. č. | DN | L | A | B |
|---------|-----|------|------|------|
| | | (mm) | (mm) | (mm) |
| AP1-20 | 20 | 59 | 36 | 41 |
| AP1-25 | 25 | 59 | 42 | 44 |
| AP1-40 | 40 | 78 | 69 | 60 |
| AP1-50 | 50 | 79 | 80 | 74 |
| AP1-63 | 63 | 114 | 98 | 121 |
| AP1-80 | 80 | 114 | 115 | 137 |
| AP1-100 | 100 | 146 | 128 | 157 |
| AP1-150 | 150 | 146 | 188 | 224 |
| AP1-200 | 200 | 135 | 240 | 265 |
| AP1-250 | 250 | - | - | - |



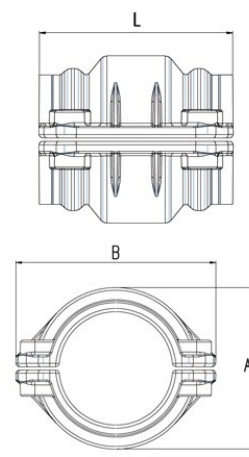
DN20 až DN50



DN20 až DN50



DN63 až DN250



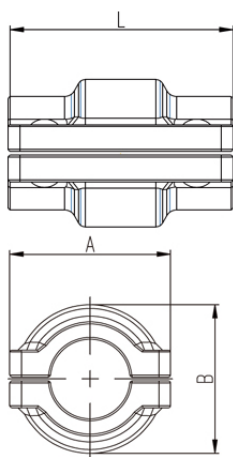
DN63 až DN250

Přímé spojky pro vysoké teploty; těsnění z vitonu FKM

| Obj. č. | DN | L | A | B |
|----------|-----|------|------|------|
| | | (mm) | (mm) | (mm) |
| AP1V-20 | 20 | 59 | 36 | 41 |
| AP1V-25 | 25 | 59 | 42 | 44 |
| AP1V-40 | 40 | 78 | 69 | 60 |
| AP1V-50 | 50 | 79 | 80 | 74 |
| AP1V-63 | 63 | 114 | 98 | 121 |
| AP1V-80 | 80 | 114 | 115 | 137 |
| AP1V-100 | 100 | 146 | 128 | 157 |
| AP1V-150 | 150 | 146 | 188 | 224 |
| AP1V-200 | 200 | 135 | 240 | 265 |



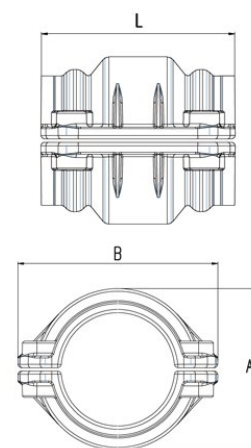
DN20 až DN50



DN20 až DN50



DN63 až DN200



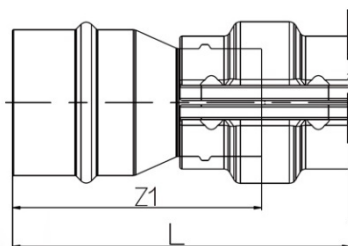
DN63 až DN200

Redukované spojky

| Obj. č. | DN 1 | DN 2 | L | Z1 |
|-------------|------|------|------|------|
| | | | (mm) | (mm) |
| AP1R-2025 | 20 | 25 | 130 | 67 |
| AP1R-2540 | 25 | 40 | 156 | 84 |
| AP1R-2550 | 25 | 50 | 160 | 86 |
| AP1R-4050 | 40 | 50 | 172 | 91 |
| AP1R-4063 | 40 | 63 | 156 | 116 |
| AP1R-5063 | 50 | 63 | 157 | 117 |
| AP1R-5080 | 50 | 80 | 158 | 117 |
| AP1R-6380 | 63 | 80 | 126 | - |
| AP1R-63100 | 63 | 100 | 152 | - |
| AP1R-80100 | 80 | 100 | 141 | - |
| AP1R-80150 | 80 | 150 | 155 | - |
| AP1R-100150 | 100 | 150 | 172 | - |
| AP1R-150200 | 100 | 200 | 170 | - |
| AP1R-200250 | 200 | 250 | - | - |



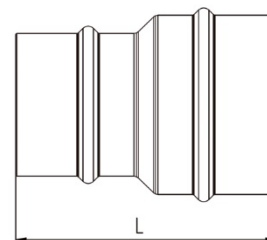
DN20 až DN50



DN20 až DN50



DN63 až DN200



DN63 až DN200

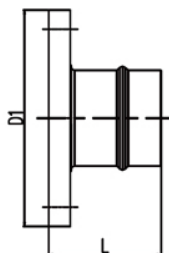
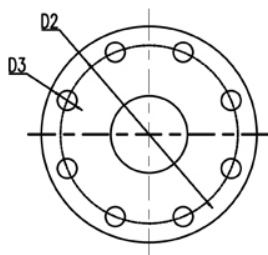
Redukce na systém TA

| Obj. č. | Airpipe DN | TA DN |
|-------------|------------|-------|
| AP1T-5050 | 50 | 50 |
| AP1T-6363 | 63 | 63 |
| AP1T-8076 | 80 | 76 |
| AP1T-100100 | 100 | 100 |
| AP1T-150168 | 150 | 168 |



Přímé spojky s přírubou

| Obj. č. | DN | DN Příruby | Šroub | L | D1 | D2 | D3 |
|-------------|-----|------------|-------|------|------|-------|------|
| | | | | (mm) | (mm) | (mm) | (mm) |
| AP1F-6563 | 63 | 65 | M16 | 85 | 180 | 139,7 | 18 |
| AP1F-8063 | 63 | 80 | M16 | 85 | 190 | 152,4 | 18 |
| AP1F-10063 | 63 | 100 | M16 | 87 | 230 | 190,5 | 18 |
| AP1F-6580 | 80 | 65 | M16 | 87 | 180 | 139,7 | 18 |
| AP1F-8080 | 80 | 80 | M16 | 82 | 190 | 152,4 | 18 |
| AP1F-10080 | 80 | 100 | M16 | 84 | 230 | 190,5 | 18 |
| AP1F-12580 | 80 | 125 | M16 | 84 | 255 | 215,9 | 22 |
| AP1F-80100 | 100 | 80 | M16 | 92 | 190 | 152,4 | 18 |
| AP1F-100100 | 100 | 100 | M16 | 92 | 230 | 190,5 | 18 |
| AP1F-125100 | 100 | 125 | M16 | 92 | 255 | 215,9 | 22 |
| AP1F-150100 | 100 | 150 | M16 | 92 | 280 | 241,3 | 18 |
| AP1F-125150 | 150 | 125 | M20 | 100 | 255 | 215,9 | 22 |
| AP1F-150150 | 150 | 150 | M20 | 100 | 280 | 241,3 | 22 |
| AP1F-200150 | 150 | 200 | - | - | - | - | - |
| AP1F-200200 | 200 | 200 | M20 | 109 | 345 | 298,5 | 22 |
| AP1F-250200 | 200 | 250 | - | - | - | - | - |
| AP1F-250250 | 250 | 250 | - | - | - | - | - |

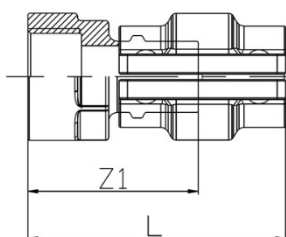


Přímé spojky s vnitřním závitem

| Obj. č. | DN | Závít | L | Z1 |
|----------|----|----------|------|------|
| | | | (mm) | (mm) |
| AP2-1220 | 20 | G 1/2" | 88 | 57 |
| AP2-3420 | 20 | G 3/4" | 88 | 58 |
| AP2-1225 | 25 | G 1/2" | 90 | 59 |
| AP2-1025 | 25 | G 1" | 90 | 60 |
| AP2-1040 | 40 | G 1" | 119 | 78 |
| AP2-2050 | 50 | G 2" | 120 | 79 |
| AP2-2563 | 63 | G 2 1/2" | 93 | - |
| AP2-3080 | 80 | G 3" | 100 | - |



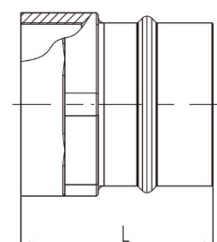
DN20 až DN50



DN20 až DN50



DN63 až DN80



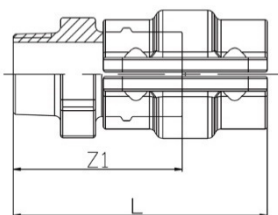
DN63 až DN80

Přímé spojky s vnějším závitem

| Obj. č. | DN | Závít | L | Z1 |
|----------|----|----------|------|------|
| | | | (mm) | (mm) |
| AP3-1220 | 20 | R 1/2" | 90 | 59 |
| AP3-3420 | 20 | R 3/4" | 91 | 60 |
| AP3-1225 | 25 | R 1/2" | 92 | 60 |
| AP3-3425 | 25 | R 3/4" | 93 | 60 |
| AP3-1025 | 25 | R 1" | 93 | 62 |
| AP3-1040 | 40 | R 1" | 119 | 78 |
| AP3-5440 | 40 | R 1 1/4" | 122 | 81 |
| AP3-1540 | 40 | R 1 1/2" | 122 | 81 |
| AP3-2040 | 40 | R 2" | 122 | 81 |
| AP3-1550 | 50 | R 1 1/2" | 122 | 81 |
| AP3-2050 | 50 | R 2" | 126 | 85 |
| AP3-2063 | 63 | R 2" | 98 | - |
| AP3-2563 | 63 | R 2 1/2" | 103 | - |
| AP3-2580 | 80 | R 2 1/2" | 107 | - |
| AP3-3080 | 80 | R 3" | 110 | - |



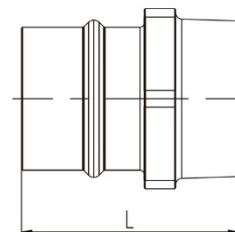
DN20 až DN50



DN20 až DN50



DN63 až DN80



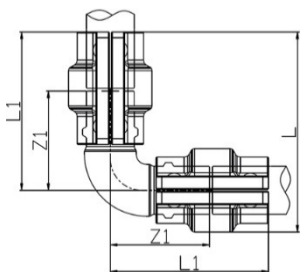
DN63 až DN80

Kolena 90°

| Obj. č. | DN | L1 | L | Z1 |
|----------|-----|------|------|-------|
| | | (mm) | (mm) | (mm) |
| AP12-20 | 20 | 80 | 100 | 61,0 |
| AP12-25 | 25 | 83 | 105 | 67,0 |
| AP12-40 | 40 | 109 | 139 | 91,0 |
| AP12-50 | 50 | 115 | 152 | 101,0 |
| AP12-63 | 63 | - | 143 | 105,0 |
| AP12-80 | 80 | - | 156 | 110,0 |
| AP12-100 | 100 | - | 194 | 140,0 |
| AP12-150 | 150 | - | 265 | 185,0 |
| AP12-200 | 200 | - | 315 | 207,5 |
| AP12-250 | 250 | - | - | - |



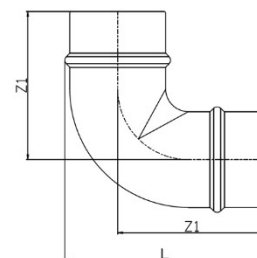
DN20 až DN50



DN20 až DN50



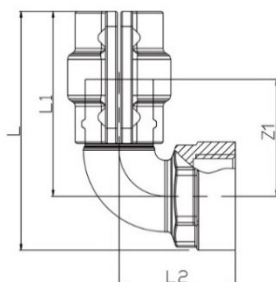
DN63 až DN250



DN63 až DN250

Kolena 90° s vnitřním závitem

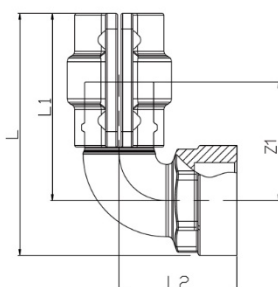
| Obj. č. | DN | Závit | L | L1 | L2 | Z1 |
|-----------|----|----------|------|------|------|------|
| | | | (mm) | (mm) | (mm) | (mm) |
| AP14-1220 | 20 | G 1/2" | 95 | 79 | 49 | 49 |
| AP14-3420 | 20 | G 3/4" | 95 | 79 | 49 | 49 |
| AP14-1225 | 25 | G 1/2" | 102 | 82 | 52 | 52 |
| AP14-1025 | 25 | G 1" | 102 | 82 | 52 | 52 |
| AP14-1540 | 40 | G 1 1/2" | 141 | 109 | 69 | 69 |
| AP14-2025 | 50 | G 2" | 151 | 114 | 74 | 74 |





Kolena 90° s vnějším závitem

| Obj. č. | DN | Závit | L | L1 | L2 | Z1 |
|-----------|----|----------|------|------|------|------|
| | | | (mm) | (mm) | (mm) | (mm) |
| AP13-1220 | 20 | R 1/2" | 95 | 79 | 49 | 49 |
| AP13-3420 | 20 | R 3/4" | 95 | 79 | 49 | 49 |
| AP13-1225 | 25 | R 1/2" | 102 | 82 | 52 | 52 |
| AP13-1025 | 25 | R 1" | 102 | 82 | 52 | 52 |
| AP13-1540 | 40 | R 1 1/2" | 141 | 109 | 69 | 69 |
| AP13-2025 | 50 | R 2" | 151 | 114 | 74 | 74 |

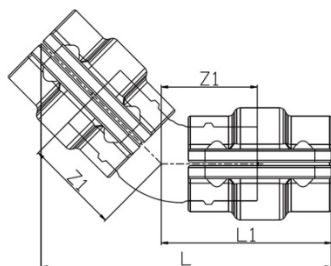


Kolena 45°

| Obj. č. | DN | L | L1 | Z1 |
|----------|-----|------|------|------|
| | | (mm) | (mm) | (mm) |
| AP21-20 | 20 | 118 | 70 | 39 |
| AP21-25 | 25 | 119 | 71 | 40 |
| AP21-40 | 40 | 159 | 92 | 52 |
| AP21-50 | 50 | 162 | 95 | 54 |
| AP21-63 | 63 | 144 | - | 84 |
| AP21-80 | 80 | 145 | - | 85 |
| AP21-100 | 100 | 179 | - | 105 |
| AP21-150 | 150 | 215 | - | 126 |
| AP21-200 | 200 | 231 | - | 135 |
| AP21-250 | 250 | - | - | - |



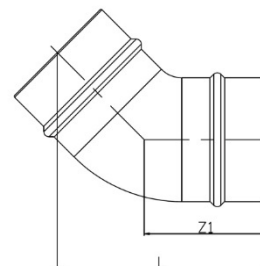
DN20 až DN50



DN20 až DN50



DN63 až DN250

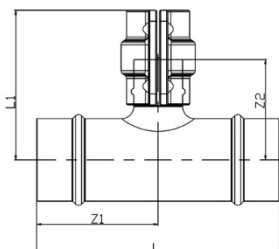


DN63 až DN250

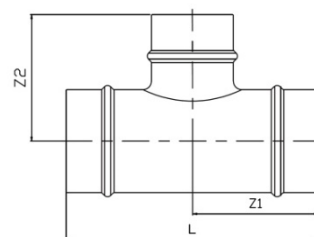


T-spojky s redukovanou odbočkou

| Obj. č. | Rozměry DN | L | Z1 | Z2 | L1 |
|-------------|-----------------|------|------|------|------|
| | | (mm) | (mm) | (mm) | (mm) |
| AP25-2025 | 25 × 20 × 25 | 160 | 50 | 51 | 80 |
| AP25-2540 | 40 × 25 × 40 | 200 | 61 | 60 | 90 |
| AP25-2550 | 50 × 25 × 50 | 220 | 70 | 71 | 101 |
| AP25-4050 | 50 × 40 × 50 | 220 | 70 | 74 | 114 |
| AP25-4063 | 63 × 40 × 63 | 200 | 100 | 83 | 122 |
| AP25-5063 | 63 × 50 × 63 | 200 | 100 | 83 | 123 |
| AP25-4080 | 80 × 40 × 80 | 190 | 100 | 92 | 132 |
| AP25-5080 | 80 × 50 × 80 | 200 | 106 | 92 | 133 |
| AP25-6380 | 80 × 63 × 80 | 226 | 118 | 100 | 141 |
| AP25-50100 | 100 × 50 × 100 | 210 | 105 | 105 | - |
| AP25-63100 | 100 × 63 × 100 | 236 | 118 | 118 | - |
| AP25-80100 | 100 × 80 × 100 | 246 | 123 | 121 | - |
| AP25-63150 | 150 × 63 × 150 | 242 | 121 | 150 | - |
| AP25-80150 | 150 × 80 × 150 | 226 | 131 | 147 | - |
| AP25-100150 | 150 × 100 × 150 | 272 | 136 | 162 | - |
| AP25-63200 | 200 × 63 × 200 | 240 | 120 | 170 | - |
| AP25-80200 | 200 × 80 × 200 | 256 | 128 | 171 | - |
| AP25-100200 | 200 × 100 × 200 | 276 | 138 | 182 | - |
| AP25-150200 | 200 × 150 × 200 | 344 | 172 | 182 | - |
| AP25-200250 | 250 × 200 × 250 | - | - | - | - |



DN20 až DN50



DN63 až DN250

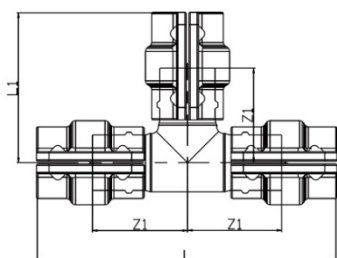


T-spojky

| Obj. č. | DN | L | L1 | Z1 |
|----------|-----|------|------|-------|
| | | (mm) | (mm) | (mm) |
| AP24-20 | 20 | 160 | 80 | 49 |
| AP24-25 | 25 | 166 | 83 | 52 |
| AP24-40 | 40 | 218 | 109 | 69 |
| AP24-50 | 50 | 230 | 115 | 74 |
| AP24-63 | 63 | 200 | - | 100 |
| AP24-80 | 80 | 220 | - | 110 |
| AP24-100 | 100 | 262 | - | 131 |
| AP24-150 | 150 | 332 | - | 170 |
| AP24-200 | 200 | 375 | - | 187,5 |
| AP24-250 | 250 | - | - | - |



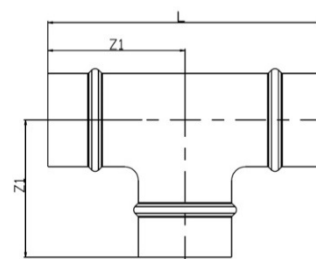
DN20 až DN50



DN20 až DN50



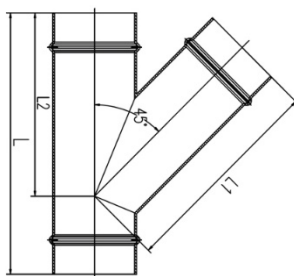
DN63 až DN250



DN63 až DN250

T-spojky se šikmou odbočkou 45°

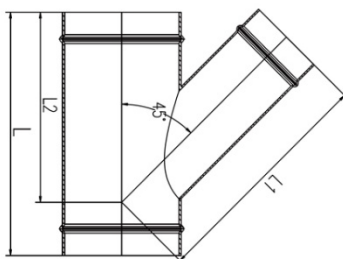
| Obj. č. | DN | L | L1 | L2 |
|----------|-----|------|------|------|
| | | (mm) | (mm) | (mm) |
| AP33-63 | 63 | 238 | 184 | 163 |
| AP33-80 | 80 | 262 | 211 | 184 |
| AP33-100 | 100 | 305 | 246 | 213 |
| AP33-150 | 150 | 385 | 340 | 280 |
| AP33-200 | 200 | 459 | 400 | 347 |





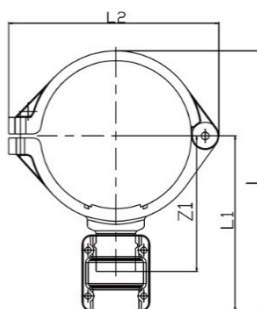
T-spojky se šikmou redukovanou odbočkou 45°

| Obj. č. | DN | L | L1 | L2 |
|-------------|-----|------|------|------|
| | | (mm) | (mm) | (mm) |
| AP34-80100 | 282 | 282 | 226 | 202 |
| AP34-80150 | 292 | 292 | 276 | 235 |
| AP34-100150 | 312 | 312 | 300 | 244 |
| AP34-100200 | 320 | 320 | 339 | 275 |
| AP34-150200 | 394 | 394 | 377 | 312 |



Přímé odbočky se spojkou

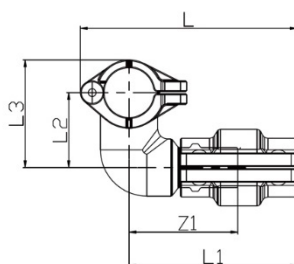
| Obj. č. | DN | Odbočka DN | Otvor | L | L1 | L2 | Z1 |
|------------|-----|------------|-------|------|------|------|------|
| | | | (mm) | (mm) | (mm) | (mm) | (mm) |
| AP40-40100 | 100 | 40 | 38 | 204 | 134 | 162 | 104 |
| AP40-40150 | 150 | 40 | 51 | 267 | 180 | 215 | 150 |
| AP40-50150 | 150 | 50 | 51 | 255 | 181 | 215 | 151 |
| AP40-40200 | 200 | 40 | 51 | 329 | 206 | 269 | 176 |
| AP40-50200 | 200 | 50 | 51 | 330 | 207 | 269 | 177 |





Úhlové odbočky se spojkou

| Obj. č. | DN | Odbočka DN | Otvor | L | L1 | Z1 | L2 | L3 |
|------------|-----|------------|-------|------|------|------|------|------|
| | | | (mm) | (mm) | (mm) | (mm) | (mm) | (mm) |
| AP42-2025 | 25 | 20 | 16 | 110 | 85 | 55 | 38 | 55 |
| AP42-2525 | 25 | 25 | 16 | 110 | 85 | 55 | 38 | 55 |
| AP42-2040 | 40 | 20 | 22 | 125 | 91 | 61 | 45 | 70 |
| AP42-2540 | 40 | 25 | 22 | 125 | 91 | 61 | 45 | 70 |
| AP42-2050 | 50 | 20 | 25 | 129 | 89 | 59 | 54 | 84 |
| AP42-2550 | 50 | 25 | 25 | 129 | 89 | 59 | 54 | 84 |
| AP42-2063 | 63 | 20 | 25 | 152 | 89 | 59 | 71 | 112 |
| AP42-2563 | 63 | 25 | 25 | 152 | 89 | 59 | 71 | 112 |
| AP42-2080 | 80 | 20 | 25 | 158 | 89 | 59 | 77 | 127 |
| AP42-2580 | 80 | 25 | 25 | 158 | 89 | 59 | 77 | 127 |
| AP42-20100 | 100 | 20 | 25 | 154 | 83 | 53 | 97 | 154 |
| AP42-25100 | 100 | 25 | 25 | 154 | 83 | 53 | 97 | 154 |
| AP42-20150 | 150 | 20 | 25 | 202 | 82 | 52 | 123 | 204 |
| AP42-25150 | 150 | 25 | 25 | 202 | 82 | 53 | 123 | 204 |
| AP42-25200 | 200 | 25 | 25 | 256 | 84 | 55 | 149 | 267 |



Přímé odbočky s vnitřním závitem

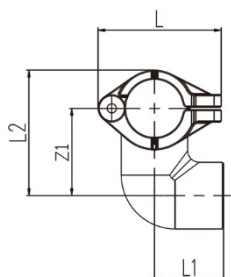
| Obj. č. | DN | Odbočka | Otvor |
|------------|-----|---------|-------|
| | | | (mm) |
| AP41-1250 | 50 | G 1/2" | 25 |
| AP41-3450 | 50 | G 3/4" | 25 |
| AP41-1263 | 63 | G 1/2" | 25 |
| AP41-3463 | 63 | G 3/4" | 25 |
| AP41-1280 | 80 | G 1/2" | 25 |
| AP41-3480 | 80 | G 3/4" | 25 |
| AP41-12100 | 100 | G 1/2" | 25 |
| AP41-34100 | 100 | G 3/4" | 25 |
| AP41-12150 | 150 | G 1/2" | 25 |
| AP41-34150 | 150 | G 3/4" | 25 |
| AP41-12200 | 200 | G 1/2" | 25 |
| AP41-34200 | 200 | G 3/4" | 25 |





Úhlové odbočky s vnitřním závitem

| Obj. č. | DN | Odbočka | Otvor | L | L1 | Z1 | L2 |
|------------|-----|---------|-------|------|------|------|------|
| | | | (mm) | (mm) | (mm) | (mm) | (mm) |
| AP43-1225 | 25 | G 1/2" | 16 | 54 | 30 | 38 | 55 |
| AP43-1240 | 40 | G 1/2" | 22 | 72 | 42 | 45 | 70 |
| AP43-3440 | 40 | G 3/4" | 22 | 72 | 42 | 45 | 70 |
| AP43-1250 | 50 | G 1/2" | 25 | 83 | 46 | 54 | 84 |
| AP43-3450 | 50 | G 3/4" | 25 | 83 | 47 | 54 | 84 |
| AP43-1263 | 63 | G 1/2" | 25 | 126 | 65 | 75 | 112 |
| AP43-3463 | 63 | G 3/4" | 25 | 126 | 78 | 75 | 112 |
| AP43-1280 | 80 | G 1/2" | 25 | 138 | 65 | 80 | 127 |
| AP43-3480 | 80 | G 3/4" | 25 | 138 | 78 | 80 | 127 |
| AP43-12100 | 100 | G 1/2" | 25 | 170 | 54 | 95 | 150 |
| AP43-12150 | 150 | G 3/4" | 25 | 219 | 55 | 120 | 201 |



Křížové spojky

| Obj. č. | DN |
|----------|-----|
| AP50-63 | 63 |
| AP50-80 | 80 |
| AP50-100 | 100 |
| AP50-150 | 150 |
| AP50-200 | 200 |



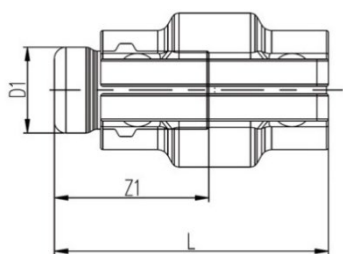


Záslepky

| Obj. č. | DN | L | D1 | Z1 |
|----------|-----|------|-------|------|
| | | (mm) | (mm) | (mm) |
| AP61-20 | 20 | 70 | 22,0 | 40 |
| AP61-25 | 25 | 70 | 27,0 | 40 |
| AP61-40 | 40 | 90 | 42,0 | 49 |
| AP61-50 | 50 | 91 | 52,0 | 50 |
| AP61-63 | 63 | 54 | 68,0 | - |
| AP61-80 | 80 | 55 | 85,4 | - |
| AP61-100 | 100 | 70 | 101,8 | - |
| AP61-150 | 150 | 70 | 153,0 | - |
| AP61-200 | 200 | 70 | 205,0 | - |
| AP61-250 | 250 | - | - | - |



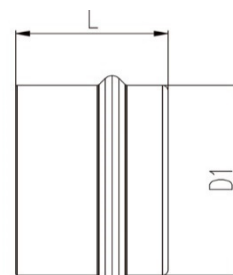
DN20 až DN50



DN20 až DN50



DN63 až DN250



DN63 až DN250

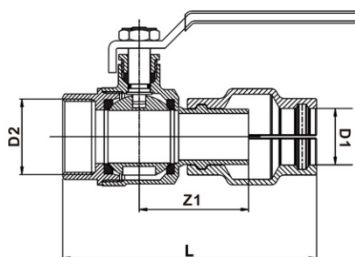
Koncové krabice

| Obj. č. | DN |
|-----------|------------|
| AP70-1220 | 1 × G 1/2" |
| AP70-1225 | 1 × G 1/2" |
| AP71-1220 | 2 × G 1/2" |
| AP71-1225 | 2 × G 1/2" |



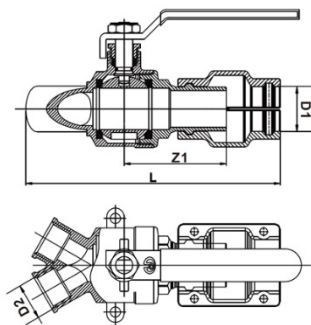
Kulové kohouty se spojkou a vnitřním závitem

| Obj. č. | D1 | D2 | L | Z1 |
|-----------|------|----------|------|------|
| | (mm) | (mm) | (mm) | (mm) |
| AP72-1220 | 20 | G 1/2" | 118 | 52 |
| AP72-1225 | 25 | G 1/2" | 115 | 55 |
| AP72-1025 | 25 | G 1" | 215 | 76 |
| AP72-1540 | 40 | G 1 1/2" | 154 | 80 |
| AP72-2050 | 50 | G 2" | 165 | 76 |
| AP72-2563 | 63 | G 2 1/2" | - | - |



Kulové kohouty se spojkou a 2 vnitřními závity

| Obj. č. | D1 | D2 | L | Z1 |
|-----------|------|------|------|------|
| | (mm) | (mm) | (mm) | (mm) |
| AP74-1220 | 20 | 1/2" | 133 | 52 |
| AP74-1225 | 25 | 1/2" | 144 | 55 |



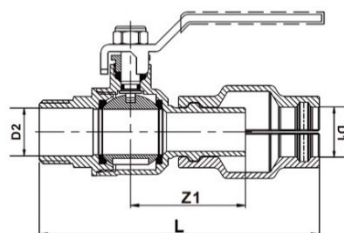
Kulové kohouty se spojkou a 2 vnitřními závity 75°

| Obj. č. | Spojka DN | Závit |
|-----------|-----------|-----------|
| AP75-1220 | 20 | 2× G 1/2" |
| AP75-1225 | 25 | 2× G 1/2" |



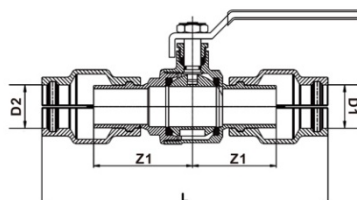
Kulové kohouty se spojkou a vnějším závitem

| Obj. č. | D1 | D2 | L | Z1 |
|-----------|------|--------|------|------|
| | (mm) | (mm) | (mm) | (mm) |
| AP73-3420 | 20 | 3/4" | 116 | 52 |
| AP73-1025 | 25 | 1" | 122 | 55 |
| AP73-1540 | 40 | 1 1/2" | 163 | 76 |
| AP73-2050 | 50 | 2" | 177 | 80 |
| AP73-2563 | 63 | 2 1/2" | - | - |



Kulové kohouty se spojkami

| Obj. č. | D1 | D2 | L | Z1 |
|---------|------|------|------|------|
| | (mm) | (mm) | (mm) | (mm) |
| AP76-20 | 20 | 20 | 165 | 52 |
| AP76-25 | 25 | 25 | 169 | 55 |
| AP76-40 | 40 | 40 | 232 | 76 |
| AP76-50 | 50 | 50 | 242 | 80 |
| AP76-63 | 63 | 63 | - | - |



Uzavírací klapky se spojkami

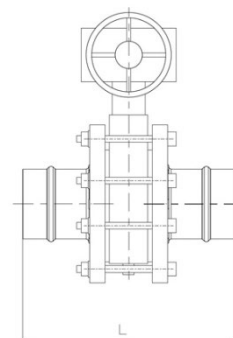
| Obj. č. | DN | Ovládání | L |
|------------|-----|------------|------|
| | | | (mm) |
| AP80CN-80 | 80 | páka | 210 |
| AP80CN-100 | 100 | převodovka | 236 |
| AP80CN-150 | 150 | převodovka | 256 |
| AP80CN-200 | 200 | převodovka | 278 |
| AP80CN-250 | 250 | převodovka | - |



DN80



DN100 až DN250



Uzavírací klapky se spojkami pro vysoké teploty

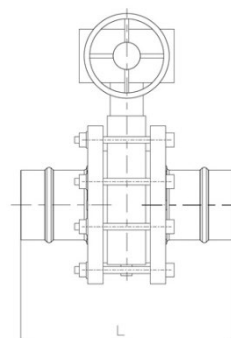
| Obj. č. | DN | Ovládání | L |
|------------|-----|------------|------|
| | | | (mm) |
| AP80CN-80 | 80 | páka | 210 |
| AP80CN-100 | 100 | převodovka | 236 |
| AP80CN-150 | 150 | převodovka | 256 |
| AP80CN-200 | 200 | převodovka | 278 |



DN80



DN100 až DN200



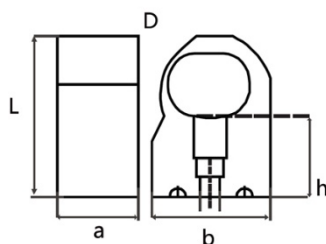
Rozdělovací lišty

| Obj. č. | Popis |
|----------|-------------------------------------|
| APMF-438 | vstupy 2× G 1/2", výstupy 4× G 3/8" |
| APMF-538 | vstupy 2× G 1/2", výstupy 5× G 3/8" |



Přichytky z plastu

| Obj. č. | Pro trubku DN | D | L | H | a | b |
|----------|---------------|------|------|------|------|------|
| | | (mm) | (mm) | (mm) | (mm) | (mm) |
| APCP-20 | 20 | 20 | 56 | 30,0 | 30 | 31 |
| APCP-25 | 25 | 25 | 60 | 27,5 | 30 | 38 |
| APCP-40 | 40 | 40 | 101 | 50,0 | 40 | 60 |
| APCP-50 | 50 | 50 | 108 | 45,0 | 40 | 75 |
| APCP-63 | 63 | 67 | 118 | 38,5 | 40 | 94 |
| APCP-80 | 80 | 84 | 172 | 71,0 | 50 | 119 |
| APCP-100 | 100 | 100 | 209 | 83,0 | 60 | 162 |





Podstavce přichytek

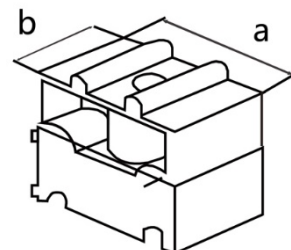
| Obj. č. | Pro trubku DN | a | b |
|---------|---------------|------|------|
| | | (mm) | (mm) |
| ACS-20 | 20 – 25 | 30 | 49 |
| ACS-40 | 40 – 50 – 65 | 30 | 94 |



ACS-20



ACS-40



Kovové přichytky

| Obj. č. | Pro trubku DN | Materiál |
|----------|---------------|---------------|
| APCC-150 | 150 | ocel |
| APCC-200 | 200 | ocel |
| APCC-250 | 250 | nerezová ocel |



Spojovací hadice AHX

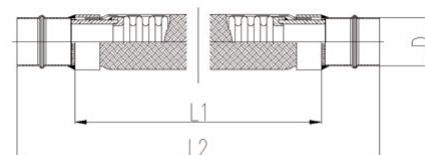
| Obj. č. | DN | Délka | D | L1 | L2 |
|---------|-----|-------|-------|-------|-------|
| | | (mm) | (mm) | (mm) | (mm) |
| AHX-20 | 20 | 570 | 20,1 | 19,69 | 22,44 |
| AHX-25 | 25 | 570 | 25,1 | 19,69 | 22,44 |
| AHX-40 | 40 | 600 | 40,1 | 19,69 | 23,62 |
| AHX-50 | 50 | 600 | 50,1 | 19,69 | 23,62 |
| AHX-63 | 63 | 650 | 67,6 | 19,69 | 25,59 |
| AHX-80 | 80 | 650 | 84,8 | 19,69 | 25,59 |
| AHX-100 | 100 | 660 | 101,8 | 19,69 | 25,98 |
| AHX-150 | 150 | 1 064 | 153,0 | 35,43 | 41,89 |
| AHX-200 | 200 | 1 554 | 205,0 | 55,12 | 61,18 |



DN20 až DN50



DN63 až DN200





Spojovací hadice AHR

| Obj. č. | DN | Délka | D | L1 | L2 |
|---------|-----|-------|--------|-------|-------|
| | | (mm) | (mm) | (mm) | (mm) |
| AHR-40 | 40 | 1 200 | 40,10 | 39,37 | 47,24 |
| AHR-50 | 50 | 1 380 | 50,10 | 43,31 | 53,15 |
| AHR-63 | 63 | 1 350 | 67,60 | 47,24 | 53,15 |
| AHR-80 | 80 | 1 850 | 84,80 | 66,93 | 72,83 |
| AHR-100 | 100 | 1 900 | 101,80 | 66,93 | 74,80 |



DN40 až DN50



DN63 až DN100

