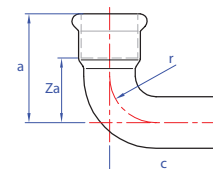


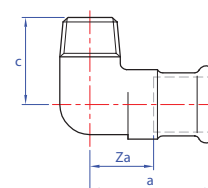
Lisovací tvarovky

s M-profilem, z mědi

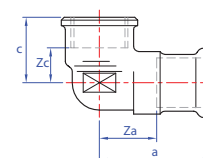
Oblouky 90° s lisovacím a vsuvným koncem - typ MM12S						
	Obj. č.	Velikost	a	c	r	Za
○	MM12S-12	12 mm	31	45	14	14
○	MM12S-15	15 mm	36	50	18	16
○	MM12S-18	18 mm	42	53	22	22
○	MM12S-22	22 mm	47	58	26	27
○	MM12S-28	28 mm	58	64	34	34
○	MM12S-35	35 mm	69	82	42	44
○	MM12S-42	42 mm	81	101	50	52
○	MM12S-54	54 mm	100	120	65	66
○	MM12S-76	76 mm	143	150	90	93
○	MM12S-89	89 mm	170	178	127	112



Kolena 90° s lisovacím koncem a vnějším závitem - typ MM13					
	Obj. č.	Velikost	a	c	Za
○	MM13-1212	12 mm × 1/2"	40	18	23
○	MM13-3815	15 mm × 3/8"	43	18	12
○	MM13-1215	15 mm × 1/2"	38	26	19
○	MM13-1218	18 mm × 1/2"	42	29	15
○	MM13-3418	18 mm × 3/4"	47	22	18
○	MM13-3422	22 mm × 3/4"	47	34	28
○	MM13-1028	28 mm × 1"	58	43	36
○	MM13-5435	35 mm × 1 1/4"	55	34	30
○	MM13-1542	42 mm × 1 1/2"	62	38	32
○	MM13-2054	54 mm × 2"	70	47	35



Kolena 90° s lisovacím koncem a vnitřním závitem - typ MM14						
	Obj. č.	Velikost	a	c	Za	Zc
○	MM14-1212	12 mm × 1/2"	39	20	22	7
○	MM14-1215	15 mm × 1/2"	41	23	21	12
○	MM14-3415	15 mm × 3/4"	36	29	16	13
○	MM14-1218	18 mm × 1/2"	41	24	21	14
○	MM14-3418	18 mm × 3/4"	52	25	32	12
○	MM14-1222	22 mm × 1/2"	37	32	16	13
○	MM14-3422	22 mm × 3/4"	45	27	24	11
○	MM14-1028	28 mm × 1"	51	33	28	14
○	MM14-5435	35 mm × 1 1/4"	55	45	29	21
○	MM14-1542	42 mm × 1 1/2"	63	52	35	26
○	MM14-2054	54 mm × 2"	74	60	42	33



Nástěnná kolena 90° s lisovacím koncem a vnitřním závitem - typ MM15							
	Obj. č.	Velikost	a	c	d	Za	Zc
○	MM15-1212	12 mm × 1/2"	63	22	35	46	10
○	MM15-1215	15 mm × 1/2"	42	23	36	22	9
○	MM15-1218	18 mm × 1/2"	43	24	39	23	9
○	MM15-3422	22 mm × 3/4"	45	27	45	24	11

