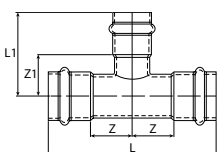
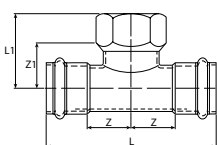


## Lisovací tvarovky V-Press

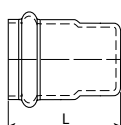
z uhlíkové oceli



Redukované t-kusy s lisovacími konci VC25							
Obj. č.	Velikost	L	L1	Z	Z1	Hmotnost (g)	Balení (ks)
VC25-121512	12 × 15 × 12 mm	72	42	17	19	52	10
VC25-151215	15 × 12 × 15 mm	84	40	19	20	52	10
VC25-181518	18 × 15 × 18 mm	84	42	19	19	66	10
VC25-221522	22 × 15 × 22 mm	84	44	18	21	89	10
VC25-221822	22 × 18 × 22 mm	86	45	19	22	89	10
VC25-281528	28 × 15 × 28 mm	84	47	17	24	118	10
VC25-281828	28 × 18 × 28 mm	86	49	18	26	120	10
VC25-282228	28 × 22 × 28 mm	92	49	21	25	127	10
VC25-351535	35 × 15 × 35 mm	84	50	14	27	152	4
VC25-352235	35 × 22 × 35 mm	94	53	19	29	164	4
VC25-352835	35 × 28 × 35 mm	102	53	23	28	174	4
VC25-422242	42 × 22 × 42 mm	114	57	19	33	221	4
VC25-422842	42 × 28 × 42 mm	120	57	22	32	227	4
VC25-423542	42 × 35 × 42 mm	134	58	29	30	244	2
VC25-542254	54 × 22 × 54 mm	124	63	20	39	322	1
VC25-542854	54 × 28 × 54 mm	134	63	25	38	332	1
VC25-543554	54 × 35 × 54 mm	134	64	25	36	364	1
VC25-544254	54 × 42 × 54 mm	144	74	30	36	361	1



T-kusy s vnitřním závitem a lisovacími konci VC30							
Obj. č.	Velikost	L	L1	Z	Z1	Hmotnost (g)	Balení (ks)
VC30-1215	15 × 1/2" × 15 mm	82	36	18	21	77	10
VC30-1218	18 × 1/2" × 18 mm	84	37	19	22	89	10
VC30-1222	22 × 1/2" × 22 mm	90	38	21	23	102	10
VC30-1228	28 × 1/2" × 28 mm	90	44	21	29	124	10
VC30-1028	28 × 1" × 28 mm	98	49	24	30	203	10
VC30-1235	35 × 1/2" × 35 mm	108	46	26,5	31	170	4
VC30-1242	42 × 1/2" × 42 mm	134	51	29	36	221	2
VC30-1254	54 × 1/2" × 54 mm	154	57	35,5	42	352	1



Záslepky s lisovacím koncem VC61				
Obj. č.	Velikost	L	Hmotnost (g)	Balení (ks)
VC61-15	15 mm	28	22	10
VC61-18	18 mm	29	27	10
VC61-22	22 mm	29	36	10
VC61-28	28 mm	31	48	10
VC61-35	35 mm	31	52	4
VC61-42	42 mm	46	109	4
VC61-54	54 mm	48	138	2