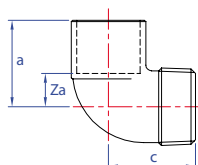
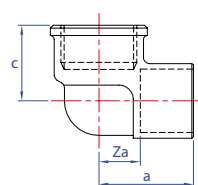


## Pájecí tvarovky

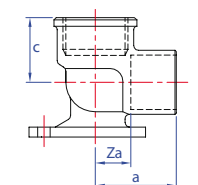
z mědi



Kolena 90° s vnějším závitem - typ N13				
Obj. č.	Velikost	a	c	Za
N13-3812	12 mm × 3/8"	15	24	6
N13-1212	12 mm × 1/2"	16	28	7
N13-1415	15 mm × 1/4"	17	23	6
N13-3815	15 mm × 3/8"	17	27	6
N13-1215	15 mm × 1/2"	20	33	9
N13-3415	15 mm × 3/4"	22	29	11
N13-1218	18 mm × 1/2"	22	30	9
N13-3418	18 mm × 3/4"	25	31	12
N13-3422	22 mm × 3/4"	27	34	11
N13-1022	22 mm × 1"	30	38	14
N13-3428	28 mm × 3/4"	30	39	11
N13-1028	28 mm × 1"	34	38	15
N13-5435	35 mm × 1 1/4"	45	50	21
N13-1542	42 mm × 1 1/2"	48	52	20
N13-2054	54 mm × 2"	60	60	27



Kolena 90° s vnitřním závitem - typ N14				
Obj. č.	Velikost	a	c	Za
N14-3812	12 mm × 3/8"	18	16	9
N14-1212	12 mm × 1/2"	21	19	12
N14-1215	15 mm × 1/2"	23	21	12
N14-3415	15 mm × 3/4"	25	23	14
N14-1218	18 mm × 1/2"	25	22	12
N14-3418	18 mm × 3/4"	28	25	15
N14-1222	22 mm × 1/2"	27	24	12
N14-3422	22 mm × 3/4"	30	27	14
N14-1022	22 mm × 1"	33	32	18
N14-3428	28 mm × 3/4"	33	30	15
N14-1028	28 mm × 1"	34	37	15
N14-1035	35 mm × 1"	41	35	18
N14-5435	35 mm × 1 1/4"	36	40	13
N14-1542	42 mm × 1 1/2"	39	47	12
N14-2054	54 mm × 2"	52	53	20



Nástěnná kolena 90° - typ N15F				
Obj. č.	Velikost	a	c	Za
N15F-1212	12 mm × 1/2"	21	19	12
N15F-1215	15 mm × 1/2"	23	22	12
N15F-1218	18 mm × 1/2"	25	22	12
N15F-3418	18 mm × 3/4"	27	24	15
N15F-3422	22 mm × 3/4"	29	26	14
N15F-3428	28 mm × 3/4"	33	30	15
N15F-1028	28 mm × 1"	37	32	19

související zboží:

Trubky  
str. 1160



Těsnění závitů  
str. 86



Kohouty  
str. 564



Teploměry  
str. 650

