

Features

- ◇ Various sizes, suitable for workpiece with different shapes and sizes
- ◇ Large inner support structure, protects the metal sheets from deformation and damage during handling process
- ◇ Slot structure efficiently increases the friction force between vacuum pad and workpiece in order to prevent the oily metal sheets from slipping during the process of handling
- ◇ Two material shore hardness are available(45 shore and 60 shore), suitable for metal sheets with different thickness and shapes
- ◇ Vacuum pads are available with various connection types



Applications

- ◇ Car stamped steel
- ◇ Steel plates with oily surface
- ◇ Glass, stamping parts, plywood
- ◇ Handling normal sheet metal (in order to avoid deformation)

Model

Model	Diameter(mm)	Material and Hardness	Connection thread
SFF	30	N-45(Green)(N-NBR)	G1/4M (M-Male thread) G1/4F (F-Female thread) G3/8F M10M M14X1.5M RA Rectangular adapter
	40		
	50		
	60		
	80	N-60(Orange)(N-NBR)	
	100		
	125		

△SFF80N-60-G3/8F

How to order

Model	Connection					
	G1/4M (Male thread)	G1/4F (Female thread)	G3/8F (Female thread)	M10M (Male thread)	M14X1.5M (Male thread)	RA Rectangular adapter
SFF30N-45	201.0340.0102	201.0340.1102	201.0340.1103	201.0340.0210	201.0340.0214	201.0340.0932
SFF30N-60	201.0360.0102	201.0360.1102	201.0360.1103	201.0360.0210	201.0360.0214	201.0360.0932
SFF40N-45	201.0440.0102	201.0440.1102	201.0440.1103	201.0440.0210	201.0440.0214	201.0440.0932
SFF40N-60	201.0460.0102	201.0460.1102	201.0460.1103	201.0460.0210	201.0460.0214	201.0460.0932
SFF50N-45	201.0540.0102	201.0540.1102	201.0540.1103	201.0540.0210	201.0540.0214	201.0540.0932
SFF50N-60	201.0560.0102	201.0560.1102	201.0560.1103	201.0560.0210	201.0560.0214	201.0560.0932
SFF60N-45	201.0640.0102	201.0640.1102	201.0640.1103	201.0640.0210	201.0640.0214	201.0640.0932
SFF60N-60	201.0660.0102	201.0660.1102	201.0660.1103	201.0660.0210	201.0660.0214	201.0660.0932
SFF80N-45	201.0840.0102	201.0840.1102	201.0840.1103	201.0840.0210	201.0840.0214	201.0840.0932
SFF80N-60	201.0860.0102	201.0860.1102	201.0860.1103	201.0860.0210	201.0860.0214	201.0860.0932
SFF100N-45	201.1040.0102	201.1040.1102	201.1040.1103	201.1040.0210	201.1040.0214	201.1040.0932
SFF100N-60	201.1060.0102	201.1060.1102	201.1060.1103	201.1060.0210	201.1060.0214	201.1060.0932
SFF125N-45	201.1240.0102	201.1240.1102	201.1240.1103	201.1240.0210	201.1240.0214	201.1240.0932
SFF125N-60	201.1260.0102	201.1260.1102	201.1260.1103	201.1260.0210	201.1260.0214	201.1260.0932

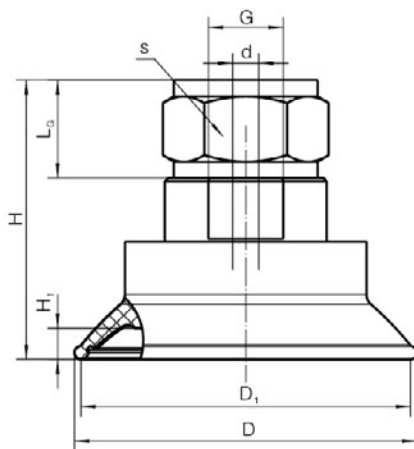
Technical parameters

Model	Vertical pull-out force (N) -60kPa	Lateral pull-out force (N) -60kPa	Lateral pull-out force on oily surface (N) -60kPa	Inner volume (cm ³)	Min. curve radius of workpiece (cm)	Recommended tube Diameter (mm)	Weight (g)
SFF30	45	35	33	1.6	35	4	11-21
SFF40	72	54	51	3.5	47.5	4	13-23
SFF50	112	90	86	7.5	70	6	20-30
SFF60	145	102	93	12.6	81	6	26-36
SFF80	288	212	190	35	115	6	43-53
SFF100	445	322	308	60	141	6	57-67
SFF125	660	475	400	115	165	8	145-155

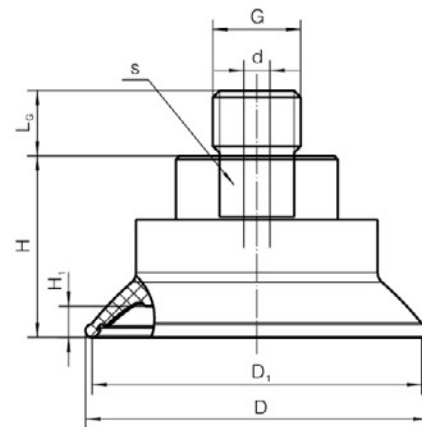
△Workpiece is with smooth, dry surface, the above pull-out force data don't include a safety factor.

Values may change according to different workpiece surfaces.

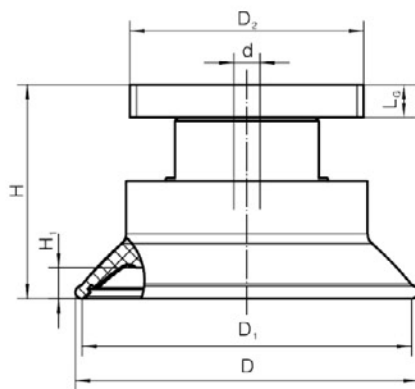
Dimensions



SFF30—SFF125(Female thread)



SFF30—SFF125(Male thread)



SFF30—SFF125 RA(Rectangular adapter)

- TXC
- TXM
- SNP
- SOP
- SB
- SBF
- SBOF
- SFT
- SBL
- SBLP
- SF
- SU
- SUF
- STC
- SFF**
- SOB
- SOF
- SOG
- SFP
- SBP
- SXP
- SGP
- SDL
- SD
- SH
- SHB
- AZP
- AZPT
- AZPR
- SAN
- SAO
- SAOT
- SAOR
- SPA
- SPC
- SPF
- SPJ
- SPJG
- SPS
- SPU
- SNT
- K
- Fittings for Vacuum Pads
- BH
- Bulkhead Connector
- Ball Joint

Dimensions

Model \ Size (mm)	D	D ₁	d	G	H	L _G	D ₂	S	H ₁
SFF30N-45-G1/4F	32	30	5	G1/4F	20	11	--	17	2.7
SFF30N-45-G1/4M	32	30	5	G1/4M	20	12	--	17	2.7
SFF30N-45-G3/8F	32	30	5	G3/8F	34	11	--	22	2.7
SFF30N-45-M10M	32	30	5	M10M	20	12	--	17	2.7
SFF30N-45-M14M	32	30	5	M14X1.5M	20	12	--	17	2.7
SFF30N-45-RA	32	30	5	--	24.7	4.7	32	--	2.7
SFF40N-45-G1/4F	42	40	5	G1/4F	22	11	--	17	3.7
SFF40N-45-G1/4M	42	40	5	G1/4M	22	12	--	17	3.7
SFF40N-45-G3/8F	42	40	5	G3/8F	36	11	--	22	3.7
SFF40N-45-M10M	42	40	5	M10M	22	12	--	17	3.7
SFF40N-45-M14M	42	40	5	M14M	22	12	--	17	3.7
SFF40N-45-RA	42	40	5	--	26.7	4.7	32	--	3.7
SFF50N-45-G1/4F	52	50	5	G1/4F	42	11	--	22	4.7
SFF50N-45-G1/4M	52	50	5	G1/4M	28	12	--	22	4.7
SFF50N-45-G3/8F	52	50	5	G3/8F	28	15	--	22	4.7
SFF50N-45-M10M	52	50	5	M10M	28	12	--	22	4.7
SFF50N-45-M14M	52	50	5	M14M	28	12	--	22	4.7
SFF50N-45-RA	52	50	5	--	32.7	4.7	32	--	4.7
SFF60N-45-G1/4F	62.5	60	5	G1/4F	45	11	--	22	6
SFF60N-45-G1/4M	62.5	60	5	G1/4M	31	12	--	22	6
SFF60N-45-G3/8F	62.5	60	5	G3/8F	31	15	--	22	6
SFF60N-45-M10M	62.5	60	5	M10M	31	12	--	22	6
SFF60N-45-M14M	62.5	60	5	M14M	31	12	--	22	6
SFF60N-45-RA	62.5	60	5	--	35.7	4.7	32	--	6
SFF80N-45-G1/4F	82	80	5	G1/4F	48	11	--	22	7.5
SFF80N-45-G1/4M	82	80	5	G1/4M	34	12	--	22	7.5
SFF80N-45-G3/8F	82	80	5	G3/8F	34	15	--	22	7.5
SFF80N-45-M10M	82	80	5	M10M	34	12	--	22	7.5
SFF80N-45-M14M	82	80	5	M14M	34	12	--	22	7.5
SFF80N-45-RA	82	80	5	--	38.7	4.7	32	--	7.5
SFF100N-45-G1/4F	103	100	5	G1/4F	50	11	--	22	9.2
SFF100N-45-G1/4M	103	100	5	G1/4M	36	12	--	22	9.2
SFF100N-45-G3/8F	103	100	5	G3/8F	36	15	--	22	9.2
SFF100N-45-M10M	103	100	5	M10M	36	12	--	22	9.2
SFF100N-45-M14M	103	100	5	M14M	36	12	--	22	9.2
SFF100N-45-RA	103	100	5	--	40.7	4.7	32	--	9.2
SFF125N-45-G1/4F	128	125	5	G1/4F	57	11	--	22	12.5
SFF125N-45-G1/4M	128	125	5	G1/4M	43	12	--	22	12.5
SFF125N-45-G3/8F	128	125	5	G3/8F	43	15	--	22	12.5
SFF125N-45-M10M	128	125	5	M10M	43	12	--	22	12.5
SFF125N-45-M14M	128	125	5	M14M	43	12	--	22	12.5
SFF125N-45-RA	128	125	5	--	47.7	4.7	32	--	12.5