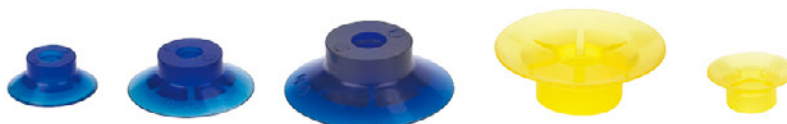


### Features

- ◇PU material, suitable for carton boxes and flat surface workpiece. The big advantage is that pu material lasts more or less 3-4 times longer than rubber.
- ◇Good flexibility.
- ◇Good wear resistance and oil resistance.
- ◇High tensile strength.



### Model

Model	Diameter (mm)	Shore hardness (color)	Connection thread
SFP	20	Material: PU Shore hardness 40 (Yellow) Material: PU Shore hardness 60 (Blue)	18F(G1/8 Female thread)
	30		18M(G1/8 Male thread)
	40		14F(G1/4 Female thread) 14M(G1/4 Male thread)

△ SFP20PU-40-18F

### How to Order

Model	Hardness	Without connecting	18F	18M	14F	14M
SFP20	40	220.2001.0000	220.2021.0000	220.2031.0000	--	--
SFP20	60	220.2002.0000	220.2022.0000	220.2032.0000	--	--
SFP30	40	220.3001.0000	220.3021.0000	220.3031.0000	--	--
SFP30	60	220.3002.0000	220.3022.0000	220.3032.0000	--	--
SFP40	40	220.4001.0000	--	--	220.4021.0000	220.4031.0000
SFP40	60	220.4002.0000	--	--	220.4022.0000	220.4032.0000

△ Refer to the fittings for vacuum pads on page 233-236.

### Pad without fitting dimensions (mm)

SFP20, SFP30, SFP40

Model	A	B	C	D	E	F	G
SFP20	12	22	8.6	5	7.5	1.6	20
SFP30	15.8	31	10.5	5	7.5	2	30
SFP40	21	41	14	6.5	10	2.5	40

### Pad with fitting dimensions (mm)

SFP20, SFP30, SFP40

Model	A	B	C	D	G
SFP20	22	14	18.6	10	G1/8F(G1/8M)
SFP30	31	14	20.5	10	G1/8F(G1/8M)
SFP40	41	21	25.5	11.5	G1/4F
	41	21	29	15	G1/4M

- TXC
- TXM
- SNP
- SOP
- SB
- SBF
- SBOF
- SFT
- SBL
- SBLP
- SF
- SU
- SUF
- STC
- SFF
- SOB
- SOE
- SOG
- SFP**
- SBP
- SXP
- SGP
- SDL
- SD
- SH
- SHB
- AZP
- AZPT
- AZPR
- SAN
- SAO
- SAOT
- SAOR
- SPA
- SPC
- SPF
- SPJ
- SPJG
- SPS
- SPU
- SNT
- K
- Fittings for Vacuum Pads
- BH
- Bulkhead Connector
- Ball Joint