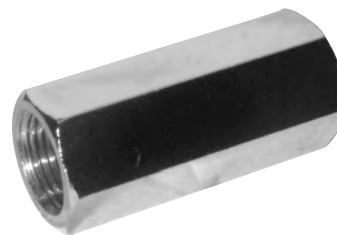


| Standard executions | | | |
|---------------------|--------|--------|------|
| Version | Symbol | Code | Item |
| M5 | | 030101 | 7FF |
| 1/8" | | 030102 | 1FF |
| 1/4" | | 030103 | 2FF |
| 3/8" | | 030104 | 3FF |
| 1/2" | | 030105 | 4FF |
| 3/4" | | 030107 | 5FF |



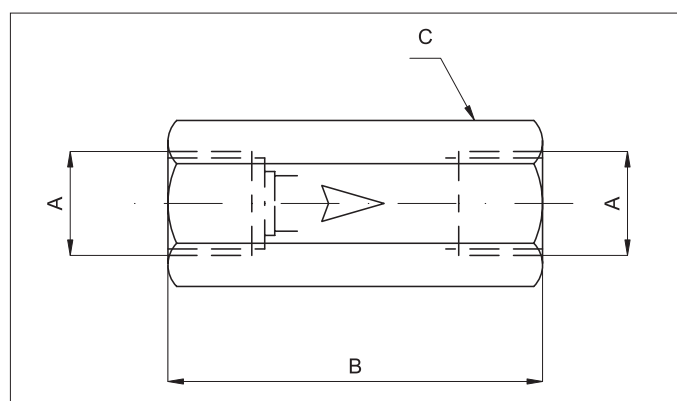
Series of uni-directional valves from brass hexagonal bar, female threaded.

In line mounting they allow the compressed air to flow in one direction only; therefore, they are useful in those applications where no return of the compressed air to the supply is admitted.

How to order: 2FFV

| 2FF | V |
|---------|--------|
| Version | Option |

| Options | Suffix |
|-----------------------------|--------|
| Guarnizioni FKM max 150 °C | V |
| Special versions on request | /S |



| A | B | C |
|------|----|----|
| M5 | 25 | 8 |
| 1/8" | 34 | 13 |
| 1/4" | 39 | 16 |
| 3/8" | 50 | 21 |
| 1/2" | 60 | 25 |
| 3/4" | 42 | 30 |

| Technical data | | | | | | | |
|-------------------|---|------------------|------------------|--------------------|---------------------|----------------|---------|
| Fluid | Compressed filtered air with or without lubrication. | | | | | | |
| Pressure range | 2 ÷ 10 bar | | | | | | |
| Temperature range | -10 °C ÷ + 60°C | | | | | | |
| Orifice | M5= 2,2 mm | 1/8"= 5,2 mm | 1/4"= 7 mm | 3/8"= 10 mm | 1/2"= 12 mm | 3/4" = 18 | 1" = 24 |
| Flow | M5= 100 NI/min | 1/8"= 500 NI/min | 1/4"= 900 NI/min | 3/8"= 2.600 NI/min | 1/2"= 3.500 NI/min. | 3100 (a 3 bar) | - |
| Mounting | In-line | | | | | | |
| Materials | Body: Nickel plated brass (3/4" not plated brass) Internal parts: Brass - Spring: Stainless steel Seals: Nitrile rubber (NBR) - 3/8" and 1/2" VITON | | | | | | |

